

COMFOR MANAGEMENT SERVICES LTD.

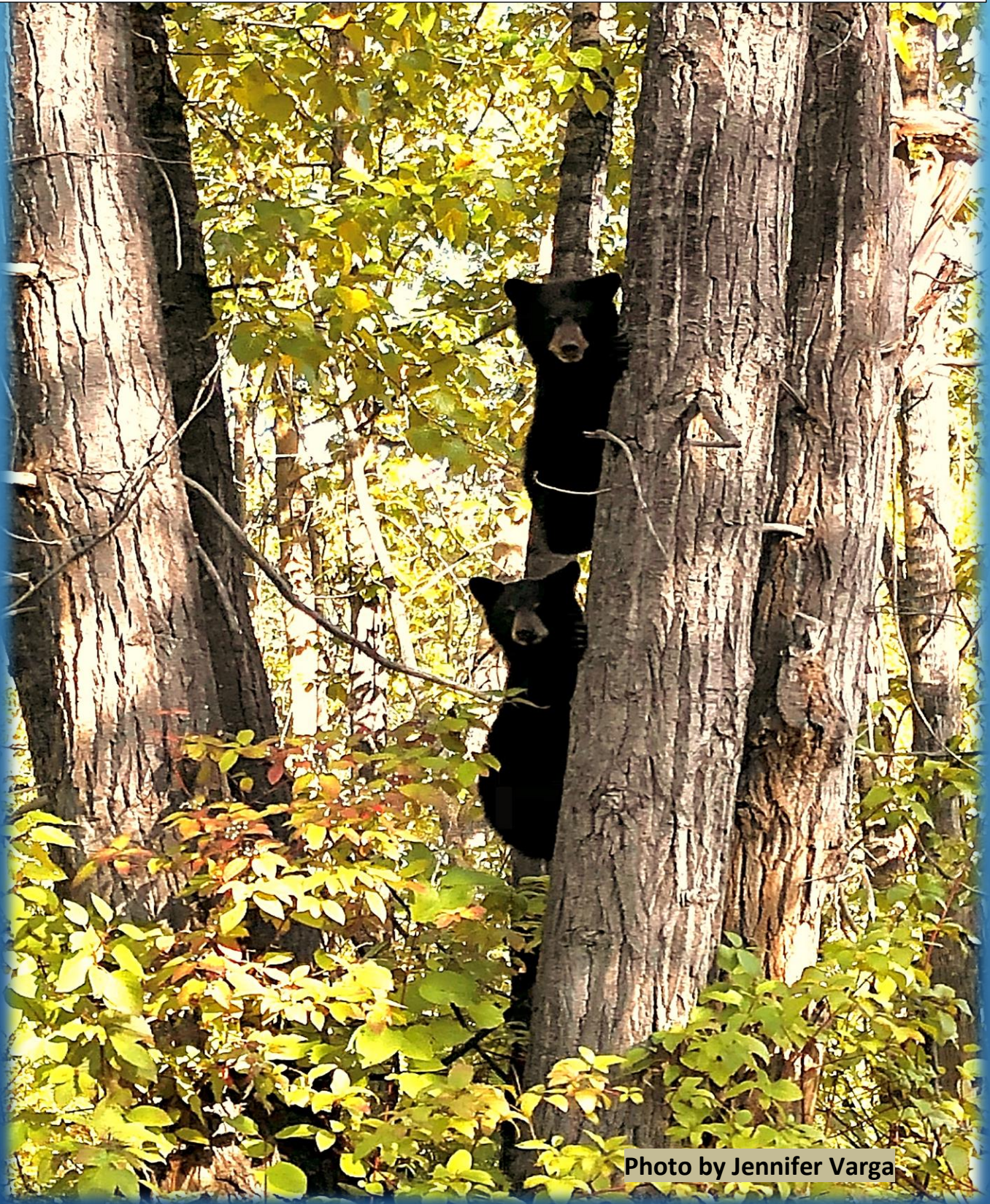


Photo by Jennifer Varga

# ANNUAL REPORT

November 1<sup>st</sup>, 2019 to October 31<sup>st</sup>, 2020





## Table of Contents

Corporate Data .....	2
Mission & Vision Statement .....	3
Mayor's Address .....	5
Manager's Report .....	6
Donations Report.....	10
Community Forest Objectives/Strategies .....	14
Linking Objectives Report .....	17
Audited Financial Statements	





# Comfor Management Services Ltd.

## Corporate Data

**Office Location:** 153 Francois Lake Drive  
P.O. Box 788  
Burns Lake, B.C. V0J 1E0  
Telephone: (250) 692-7724  
Email: [info@blcomfor.com](mailto:info@blcomfor.com)  
Website: [www.blcomfor.com](http://www.blcomfor.com)

**Staff:** Frank Varga, General Manager  
Ron Harrison, RFT Area Supervisor  
Michaela Collier, GIS Analyst  
Colleen Piper, Executive Assistant/Accounting  
Reg Blackwell, Equipment Operator

**Auditors:** Edmison Mehr, Chartered Accountants Smithers

**Bank:** Royal Bank of Canada, Burns Lake Branch

### **Board of Directors:**

Crystal Fisher, President	<i>(Member of the Public at Large)</i>
Paul Davidson, Vice President	<i>(Member of the Public at Large)</i>
Johnny Janzen, Secretary	<i>(Member of the Public at Large)</i>
Tara William, Director	<i>(Wet'suwet'en First Nation)</i>
Lloyd Adams, Director	<i>(Burns Lake Band)</i>
Jeff Brown, Director	<i>(Office of the Wet'suwet'en Hereditary Chiefs)</i>



## **COMFOR MANAGEMENT SERVICES LTD.**

153 Francois Lake Drive, P.O. Box 788  
Burns Lake, B.C. V0J 1E0  
(250) 692-7724  
info@blcomfor.com

### **Mission Statement**

**Comfor Management Services Ltd. (CMSL)** and subsidiary (**Burns Lake Community Forest Ltd.**) manage and operate the Community Forest K1A License Agreement in a safe, profitable, and innovative manner that enhances the forest resource while respecting the principles of integrated use, environmental stewardship, and public consultation. The corporation's harvesting, silviculture, and forest management activities provide benefits for the Province of British Columbia, the Village of Burns Lake, First Nations partners, all residents of the Lakes Timber Supply Area, and local and regional wood processing facilities in a sustainable manner.

### **Values**

- 1. Safety**
- 2. Profitable**
- 3. Innovative**
- 4. Enhance the forest resource**
- 5. Integrated use**
- 6. Environmental stewardship**
- 7. Public consultation**
- 8. Benefits to the Province, Village, First Nations, and residents**

### **Guiding principles**

1. Safety will be the highest priority for BLCF, its employees, contractors, and consultants while conducting work for and on behalf of BLCF. In addition, the safety of the public will be paramount within the BLCF tenure area.
2. BLCF will pursue opportunities to realize the best return from timber harvesting, provide sufficient revenue to pay for management of the CF and provide a financial return to the Province, shareholders, stakeholders, and the community.

3. BLCF, in conducting its communication, planning, operational, and silviculture activities, will seek innovative approaches and solutions to these activities.
4. BLCF will strive to continually enhance all forest resources, including timber, wildlife, cultural recreational, aquatic, and aesthetic within the community forest area.
5. BLCF, while conducting its activities, will strive to consider and incorporate other forest uses within the community forest area.
6. BLCF will incorporate sound science-based information recommendations in its forest management activities.
7. The province, First Nations, local governments, stake holders and the community will be consulted regarding proposed activities within the community forest area.
8. Taxes, royalties, rents, disbursements, donations, and other benefits will be distributed to the province, local government, shareholders, stakeholders, and the community from the profits generated from the community forest. Goods, labour, and services will be sourced from the local area to the extent it is available and cost effective to do so,

## Vision

CMSL will be the top performing community forest in British Columbia:

- In operating safely and profitably,
- In providing benefits to **the province**, our shareholders, partners, **First Nations** and residents of the Lakes Timber Supply Area,
- In providing opportunities for local employment to residents and First Nations,
- In increasing forest productivity in an **innovative** and environmentally sustainable manner,
- In supporting opportunities for integrated use,
- In ensuring the public and stakeholders are provided with opportunities for input into how the community forest is managed in an open and transparent manner.



To the residents of the Lakes District,

I look forward to receiving the Annual Report from Comfor Management Services Ltd. The Burns Lake Community Forest is integral to the ability of our community to thrive as we work to have greater control over the local forest industry that supports our residents. Through the community forest, we typically see benefits through direct employment, through funding support for local events and organizations and through the ability to manage our forests to reflect local values and priorities. A portion of the annual earnings are distributed between the Village of Burns Lake, Burns Lake Band (Ts'il Kaz Koh First Nation) and Wet'suwet'en First Nation. Considering the current prices of lumber, we are hopeful for a healthy profit in 2021.

On behalf of the council and residents of Burns Lake and surrounding rural areas, I extend a sincere thank you to the Comfor Management Services Board of Directors for their commitment to serving the community. We would specifically like to commend the Board for their efforts to mitigate wildfire throughout the Comfor management area. This effort reduces our susceptibility to the threat of extreme wildfires, protecting our homes and our health and safety. Reduction of wildfire threat for municipal and rural residents has been a priority for the Board since completing the *Burns Lake Community Forest – Landscape Fire Management Plan* in 2019. As we move from 2020 to 2021, we eagerly anticipate the completion of the actions identified in the plan.

The forest industry presents complex and constant challenges to adapt and grow and we look to the Board to manage this asset in a way that provides economic benefit, protects our community and ultimately, preserves our way of life. We have every confidence in the Board's ability to meet these challenges and move the organization forward.

Sincerely,

A handwritten signature in black ink, appearing to read "Dolores Funk", enclosed within a large, loopy circular flourish.

Dolores Funk, Mayor





# Burns Lake Community Forest Ltd.

## Your Community-Owned Forest Company

### General Manager's Report

On behalf of the board of directors, I am pleased to present this report regarding the activities and operations of Burns Lake Community Forest Ltd. (BLCF) from November 1, 2019 to October 31, 2020.

The community forest agreement area consists of 92,278.8 hectares of Crown land. From this total, just over 62,000 ha is part of the timber harvesting land-base from which BLCF harvested 160,794 m<sup>3</sup>—supplying saw logs to Babine Forest Products Ltd., Decker Lake Forest Products Ltd., Pacific Timber Ltd.



Annual Allowable Cut (AAC):	225,000 m <sup>3</sup>
Harvested	160,932 m <sup>3</sup>
Four-Year-Cut Control	900,000 m <sup>3</sup>

This was the final year of our 2016-2020 AAC harvesting 599,435m<sup>3</sup> of which only 150,566m<sup>3</sup> was green (live) trees. As of September 3, 2020 BLCFs' new AAC is 194,226m<sup>3</sup> per year with timber profile partitions in effect. We completed extensive wildfire hazard abatement works with the support of Forest Enhancement Funding in the amount of \$328,668.

BLCF generated the following employment hours by hiring local contracting companies to harvest 100 per cent of BLCF's fibre:

Logging	70,000
Hauling	11,250
Road building	13,100 this includes road maintenance.
Silviculture	19,200
Forest management	9,888

Approximately 128,630 hours of employment were generated by the community forest this fiscal year.

2019-2020 was a very busy fiscal year for BLCF. We successfully maintained our Forest Stewardship Council Certification and SAFE Company Certification. We fully implement the efforts of our landscape fire mitigation work for WFM project area- south of Burns Lake. The objective focus of our efforts is landscape level: for community protection, fiber recovery and ecosystem restoration. This is an expensive venture committed by the board. Our efforts were regularly challenged by an unprecedented wet season and of course the global pandemic. Throughout the year we successfully maintained our contracting workforce even with COVID lurking in the shadows and impacting many businesses in our community. We are proud of our efforts to help support local businesses through this tough time. It is one of the pillars and measures of success for a community forest.

We continued our work and efforts on the Mountain Pine Mitigation project, focusing on dead pine salvage. We are in the final stages of completing some keystone landscape value assessments: streams and wildlife for the community forest area base tenure.

Over 1.0 million seedlings were planted by a local contracting company, consisting of a species mix of Spruce, Pine, Douglas fir and western larch. This technique is used to enhance the resilience of a plantation to the risk of insects, disease and fire resilience.

Unfortunately, due to COVID-19 our open house and public engagement efforts were significantly scaled back. We continued to seek public input into the proceedings of the community through social media, and BLCF moved into the 21<sup>st</sup> century going virtual on board and operational meeting. It has been a way for the BLCF to maintain our operational business and continue implementing or goals, supporting our community, however, it is by no means our 'new normal'. We are encouraged that 2021 Fiscal will bring back the normal we all need to effectively engage and communicate with our community.

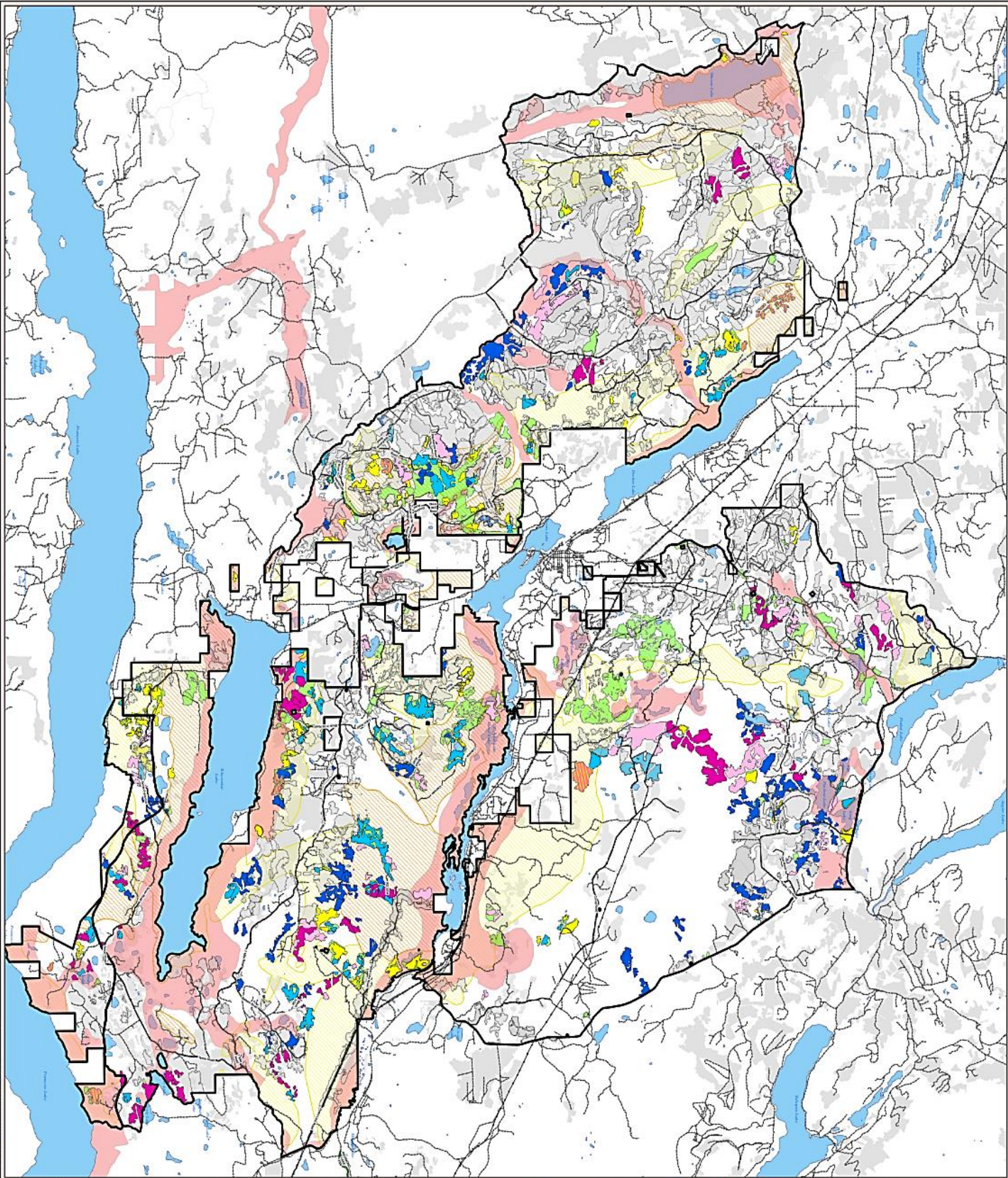
As we work through our 5-year operating plan, and 10-year tactical plan we are mindful of our vision and mission statement and continue to emphasize that our success lies in our ability to maintain and continue salvaging and harvesting in stands that are primarily leading dead pine. For community safety, ecosystem restoration and fiber recovery!











**Burns Lake Community Forest Ltd.**  
Current 5 Year Target Areas

**LEGEND**

- Year 1 Blocks (2019-2020)
- Year 2 Blocks (2021-2022)
- Year 3 Blocks (2023-2024)
- Year 4 Blocks (2025-2026)
- Year 5 Blocks (2028-2029)
- Other Blocks
- Landscaping Centers
- Refinement Visual Zone

**Other Features**

- Unimproved K1A Blocks
- Improved K1A Blocks
- K1A Boundary
- Hydro Line
- Pipe Line
- K1A Road Permit Roads
- Other roads
- Other Licensee Blocks
- Lakes

Source: Burns Lake Forest  
Map of Burns Lake Forest  
Community Forest Ltd.  
Burns Lake, B.C.  
Copyright © 2021 Burns Lake Forest  
Community Forest Ltd.  
All Rights Reserved.  
Date: 05/20/2021  
Drawn by: [Name]  
Burns Lake, B.C.







# Burns Lake Community Forest Ltd.

## Donations Policy Report 2019 /2020

**The Burns Lake Community Forest Ltd. Donations Committee** approved all donations, to October 31, 2020 fiscal year that met Donations Policy 2017-2018-01 criteria.

\$91,964.82 was donated to local education, service clubs, outdoor recreation, recreation facilities, sports teams, and events in the Lakes Timber Supply Area. The Lakes District Art Council received \$10,000 for the 2020 Arts Season.

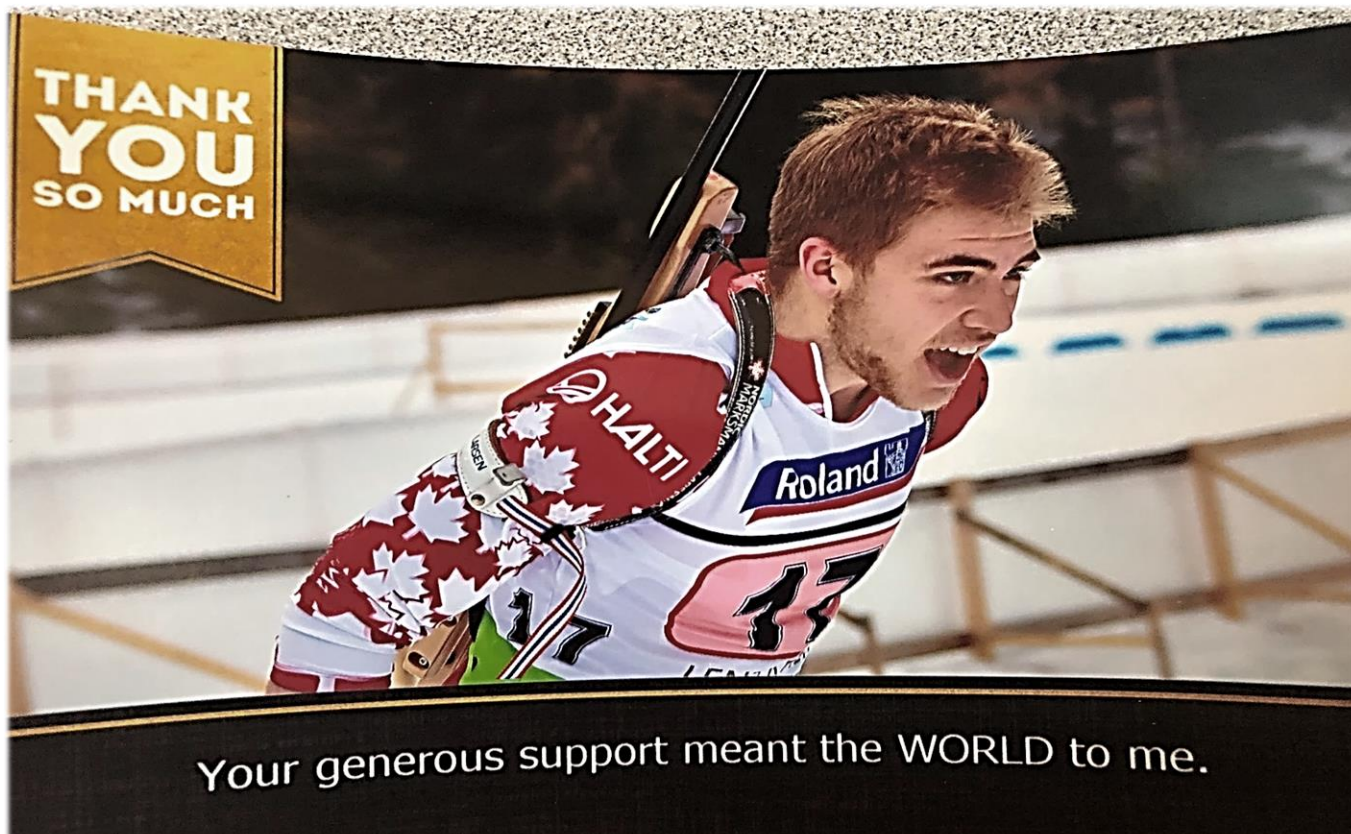
BLCF provided funding to many local sports groups this fiscal year including LDSS Senior Girls Volleyball, Mountain Biking Pig Festival, PeeWee NWDMA, Burns Lake Tumblers, North Central Pitbulls, LDSS Ski/Snowboard Team Provincials, Burns Lake Youth Soccer Club, Spirit North Archery, NWD Female Hockey, and Cole Bender for Biathlon Team Canada World Championship.

Supporting local mental health and disaster response we provided \$2,219.71 to the First Responders Cafe Society. A donation of \$4,600.00 went to the Lakes District Museum Society for emergency funding for facility work. A donation of 9,000.00 went to Lakes Outdoor Recreation Society for recreation site maintenance. The Link received a donation of \$2,500.00 for the Season of Giving Campaign. \$2,000.00 was donated to the Rotary Auction.

Other donations included are \$1,200.00 to Canadian Cancer Society for 'Peace of Mind Campaign' supporting Kordyban Lodge, Community Cancer Care Team 9<sup>th</sup> Annual Chip Run \$2,000.00, BL Mountain Biking Association \$2,500.00 for trail maintenance, and \$1,000.00 LDFES Covid-19 community support.











## *Talon Point*

Burns Lake Community Forest is very supportive of the Talon Point Project and in 2017/2018 BLCF provided in-kind machine time in the excess of \$15,000.00 to help support the initial development of Talon Point Camp. As well, BLCF contributed harvested logs specifically required for the construction of the pit houses to an estimated cost of \$5,000.00 - \$7,500.00 delivered to the site.

In continuing support for this project, in August 2020 BLCF provided funding in the amount of \$2,500.00 to help cover student wage costs for peeling logs.







# DONATIONS

**Nov 1, 2019 to Oct 31, 2020**

Date:	Donated to:	Reason/Link:	Amount:
22-Nov-19	Wet'suwet'en First Nation	Elders/Youth Christmas Dinner	\$ 400.00
30-Nov-19	Canadian Cancer Society	Peace of Mind Campaign to support Kordyban Lodge in PG	\$ 1,200.00
30-Nov-19	Burns Lake Community Event	Fun, Frost, Family Festival - BBQ, Hot Chocolate, Gift Basket Draw	\$ 1,000.00
30-Nov-19	LDSS	Senior Girls Volleyball Provincial Championships	\$ 2,000.00
04-Dec-19	B.L. Mountain Biking Association	Year Donation - Trail Maintenance	\$ 2,500.00
04-Dec-19	B.L. Mountain Biking Association	Mountain Biking Big Pig Festival - July, 2020	\$ 500.00
04-Dec-19	B.L. Mountain Biking Association	Babes in Balance - Women's Mountain Biking Retreat	\$ 500.00
04-Dec-19	B. L. Snowmobile Club	Cold Smoke Drags - February, 2020	\$ 1,000.00
04-Dec-19	LDSS	Children's XMAS Dinner	\$ 500.00
04-Dec-19	NWDMHA - Pee wee	Minor Hockey Association Support for Pee wees	\$ 2,500.00
10-Dec-19	Burns Lake Tumblers	Air Tracks	\$ 1,000.00
11-Dec-19	The Pines	Fundraiser Silent Auction - Family Membership for 1 year-Multiplex	\$ 745.11
13-Dec-19	North Central Pitbulls	Spring Hockey Tournaments	\$ 2,500.00
20-Jan-20	Cole Bender	Biathlon - Team Canada Youth World Championship	\$ 1,000.00
22-Jan-20	Lakes District Fall Fair Association	2020 76th Annual Burns Lake Fall Fair	\$ 5,000.00
24-Jan-20	The First Responders Café Society	Support for Occupational Stress	\$ 1,550.00
30-Jan-20	BL District Seniors Society	Track Resurfacing Project <i>(waiting until project start to issue cheque)</i>	\$ 10,000.00
18-Feb-20	LDSS	Ski/Snowboard Team Provincials	\$ 2,500.00
04-Mar-20	Burns Lake Chamber of Commerce	Canada Day Celebration July 1, 2020 - Birthday Cake & Water	\$ 500.00
03/03/2020	Lakes District Arts Council	February 2020 Donation	\$ 10,000.00
05-Mar-20	LDSS	Dry Grad 2020	\$ 1,000.00
12-Mar-20	Burns Lake Classic Cars	Annual Show & Shine	\$ 500.00
13-Mar-20	Burns Lake Firefighters Association	Annual Curling Bonspiel	\$ 500.00
24-Mar-20	L.D. Family Enhancement Society	Covid-19 Community Support Committee	\$ 1,000.00
23-Apr-20	Lakes District Museum Society	Emerg Funding Request for financial assistance for Facility Worker	\$ 4,600.00
24-Apr-20	Burns Lake Youth Soccer Club	Purchase of Supplies ie; First Aid Kits, Soccer Balls, Bags, Nets etc.	\$ 2,500.00
11-May-20	Erwin Tom	26 Cords of Dry Pine Firewood	\$ 5,000.00
03-Jun-20	Lucas Phillips	LDSS Natural Resource Scholarship	\$1,000.00
03-Jun-20	Spirit North	Archery School Kit	\$ 2,500.00
07-Jul-20	LORS	Site Maintenance	\$ 9,000.00
15-Jul-20	Community Cancer Care Team	9th Annual Chip Run	\$ 2,000.00
15-Jul-20	Burns Lake Snowmobile Club	Nellian Lake Project	\$ 4,000.00
16-Jul-20	WFN	WFN K-12 Education Awards Day (GC to Woods n Water)	\$ 100.00
16-Jul-20	Terrapro	Tchesinkut Lake Fishing Derby (GC to Woods n Water)	\$ 100.00
10-Aug-20	Robert Charlie-Talon Point	Student wage support - Peeling Logs	\$ 2,500.00
12-Aug-20	NorthWest District	Female Hockey Program	\$ 2,500.00
31-Aug-20	Wet'suwet'en Elders Society	Elders Fundraising Dance	\$ 100.00
21-Sep-20	First Responders Café Society	Workshop Funding	\$ 669.71
13-Oct-20	The Link	Season of Giving Campaign	\$ 2,000.00
27-Oct-20	WFN	Elder's Fundraising Initiative	\$ 500.00
27-Oct-20	BL Rotary Club	November Rotary Auction	\$ 2,000.00
27-Oct-20	BL Chamber of Commerce	Fun, Frost & Family Festival	\$ 1,000.00
		<b>TOTAL</b>	<b>\$ 91,964.82</b>



## **Provincial Community Forest Agreement Program Objectives and Strategies**

The Community Forest Agreement illustrates specific program objectives. The following illustrates how Burns Lake Community Forest Ltd. (BLCF) will adhere to these provincial community forest agreement objectives:

### **1. Objective: Provide long-term opportunities for achieving a range of community objectives, values, and priorities.**

BLCF will operate in a manner that encourages forest and forest resource sustainability and that enables forestry and tourism to prosper and attract new investment. BLCF will conduct operations in a manner that provides sufficient habitat of the quality required to support healthy fish and wildlife populations.

### **2. Objective: Diversify the use of and benefits derived from the community forest agreement area.**

BLCF will promote diverse economic opportunities through profit sharing. Community-based initiatives will be supported with the profit from timber harvesting and utilization of other land-based harvesting.

### **3. Objective: Provide social and economic benefits to British Columbia.**

BLCF will utilize the full allocated AAC, maintain a sustainable timber supply and manage the Community Forest area in a manner that promotes long-term forest health.

### **4. Objective: Undertake community forestry consistent with sound principles of environmental stewardship that reflect a broad spectrum of values.**

BLCF will practice environmental stewardship by identifying and using the most current best management practices with which to operate the community forest. BLCF will seek opportunities to advance knowledge through experience and education and will seek out alternative or innovative approaches to forest management.

### **5. Objective: Promote community involvement and participation.**

BLCF will operate in a transparent manner to strengthen relationships with government, local area residents, and First Nations. BLCF will encourage community awareness and participation in community forest activities and opportunities.

### **6. Objective: Promote communication and strengthen the relationship between Aboriginal and non-Aboriginal communities and persons.**

BLCF has committed to a business environment that is transparent and open to the participating communities' collaboration and input. BLCF will implement management practices that conserve and protect cultural values. BLCF will strive to reach decisions on important matters on the basis of consensus.

## **7. Objective: Foster innovation.**

BLCF will seek opportunities to advance knowledge through experience and education. BLCF supports community efforts to develop comprehensive training, and education programs that would contribute to innovative forest management.

## **8. Objective: advocate forest worker safety**

BLCF advocates for worker safety by using contractors with demonstrated and documented safe work practices and will include SAFE certified contractors.

**Burns Lake Community Forest Ltd.** is committed to meet the provincial Community Forest Program Objectives for the use of and the benefits of the stakeholders within the CFA area.

### **GUIDING PRINCIPLES**

BLCF will be guided by the following principles to ensure the Community Forest will meet the stated objectives:

BLCF commits to manage the forest on the basis of integrated resource management following the objectives of the Lakes North and Lakes South Sustainable Resource Management Plans ("SRMP"). This philosophy is expected to improve the quality of life for the people of the community. We will continue to strive toward compatible management of our timber and non-timber resources.

The community forest commits to a business environment that is transparent and open to the participating communities' collaboration and input.

BLCF commits to higher levels of cooperation and communication with local private landowners and First Nations. This level of communication is anticipated to optimize the identification of educational opportunities, forest health concerns, and overall management.



## **SOCIAL, ECONOMIC, AND BROAD RESOURCE MANAGEMENT GOALS**

BLCF will follow an integrated resource management approach with an emphasis on creating employment opportunities involving a variety of forest resources. Management strategies will adhere to the following social, economic and broad resource management goals to benefit residents of the community of Burns Lake and the province:

### **Social**

Encourage community stability by promoting diverse economic opportunities. Provide mechanisms for building community awareness and participation in community forest activities and opportunities that bring the various communities together. Encourage education opportunities in the forest industry with local colleges.

### **Economic**

Fully utilize the harvesting opportunities granted under the CFA in a manner that is sustainable. Provide and promote opportunities for a range of forest and non-timber forest products.

### **Broad Resource Management**

Manage the Burns Lake Community Forest in a manner that is guided by our management plan commitments to promote long-term sustainability. BLCF strategy sets the foundation for meeting the following provincial community forest agreement program objectives.







## BURNS LAKE COMMUNITY FOREST LTD.

Reporting Period: November 1, 2019, to October 31, 2020

C: Completed ON: Ongoing IP: In Progress

**SAFETY:** Safety will be the highest priority for BLCF, its employees, contractors, and consultants while conducting work for and on behalf of BLCF. In addition, the safety of the public will be paramount within the BLCF tenure area.

Corporate Objective Statement	British Columbia Community Forest Association Indicator	Province of B.C. Goals of the Community Forest Program	Management Plan 3 Commitments Appendix 10	Status
Zero loss time for employees and contractors.	#14 Forest Worker Safety	Advocate forest worker safety	Maintain a safety program for company employees.	ON
			Ensure all active roads are signed and road channels clearly marked.	ON
			Ensure all "active hauling " signs are kept current.	ON
			Encourage all contractors and consultants working on behalf of the BLCF to be SAFE Certified.	ON
			Incorporate an "active hauling" warning on the BLCF website.	ON
			Status: All safety commitments are being met and are ongoing.	

BLCF ensures all activities on the community forest are undertaken in a safe manner. All safety plans are updated and reviewed annually, as well as regular safety meetings conducted. Zero time was lost due to accidents for employees and contractors this reporting period. BLCF is now Safe Certified.

**PROFITABLE:** BLCF will pursue opportunities to realize the best return from timber harvesting, provide sufficient revenue to pay for management of the CF, and provide a financial return to the Province, shareholders, stakeholders, and the community.

Corporate Objective Statement	British Columbia Community Forest Association Indicator	Province of B.C. Goals of the Community Forest Program	Management Plan 3 Commitments Appendix 10	Status
Net profit margin of 5%.	#2 Total Economic Activity	Provide economic and social benefits to B.C.	Continue to use an annual operational plan.	ON
Return on equity of 20%.	#5: Cut Control		Develop and revise five and ten-year-plans based on information from a spatially-explicit forest estate modelling tool such as Patchworks.	IP
			Explore new market opportunities for saw logs, bioenergy fibre, and pulp logs.	IP
			Revise the harvesting and marketing strategy for the era when harvesting priorities will shift away from salvage.	C
			Status: All commitments are underway.	

BLCF manages the community forest in a manner to produce a continuous flow of logs and revises the harvesting strategies, as necessary, due to the changing operating conditions. BLCF, this reporting period paid \$323,881 in stumpage revenue to the government.

**INNOVATIVE:** BLCF, in conducting its communication, planning, operational, and silviculture activities, will seek innovative approaches and solutions to these activities.

Corporate Objective Statement	British Columbia Community Forest Association Indicator	Province of B.C. Goals of the Community Forest Program	Management Plan 3 Commitments Appendix 10	Status
Increase the amount of volume that is currently below utilization of all species by 50% over the amount in 2013 within 5 years.	#6: Distribution of Log Sales	Foster innovation.	Build analytical forest-level to design a secondary salvage program and a fibre value model for marketing.	C
			Develop and implement a Mountain Pine Beetle Mitigation (MPB) Project for the community forest.	C
Assess the impact of MPB attack on biodiversity.	ON			
Identify areas with the highest biodiversity value or potential to focus protection and recovery programs.	C			
Explore options to improve market opportunities.	C			
Explore innovative ways to access timber in scenic areas.	C			
Increase enhanced silviculture treatments a minimum of 200 hectares per year within 5 years.	#8 Economic Diversification		Explore utilization of deciduous to meet timber and non-timber resource values.	C
			Use improved data such as LiDAR for operational planning and to improve inventory information.	C
Harvest a minimum of 100 hectares of non-timber harvesting landbase in 5 years.	#16: Management of Sensitive Areas		Develop silviculture regimes to include understory-protection harvesting, climate change, forest-health factors, and non-timber values.	ON
			Explore opportunities for extension work with other community forests.	ON
			Update resource inventories.	C
			Achieve and maintain Forest Certification.	ON
	#17 Forest Stewardship		Develop a more complete and current set of indicator species to identify options to meet biodiversity objectives.	C
			Modify silviculture regimes to address forest management changes in the community	IP
			Encourage diversity of tree species and age classes across the landscape.	C
			Status: All commitments are underway.	

BLCF completed acquisition of Lidar flights of the Community Forest and is currently collecting and analyzing the data. BLCF is in year 3 of its landscape area base assessment of stream. All other projects are currently either completed or ongoing.

**ENHANCE THE FOREST RESOURCE:** BLCF will strive to continually enhance all forest resources, including timber, wildlife, cultural, recreational, aquatic, and aesthetic within the community forest area.

Corporate Objective Statement	British Columbia Community Forest Association Indicator	Province of B.C. Goals of the Community Forest Program	Management Plan 3 Commitments Appendix 10	Status
Improve forest productivity on the community forest by 10% in ten years.	#5: Cut Control	Diversify the use of and benefits derived from the cf area.	Undertake treatments on free-growing stands that increase forest health, reduce losses to pests and diseases, and/or improve timber quality in the future. Maintain a basic silviculture program that complies with forest legislation and ensures prompt and appropriate restocking of productive forestland. Identify options to enhance resources valued by the community. Propose silviculture regimes to include understory protection harvesting and: * undertake a demonstration/trial area to test regimes; * identify candidate stands for understory protection harvesting and undertake sensitivity analysis to determine the impacts on timber supply; and * pending successful conclusion of understory protection trials and sensitivity analyses, undertake understory protection logging of candidate stands.	C C C C
Salvage all remaining and available MPB stands within five years.	#7: Investments in Intensive Silviculture	Provide long-term opportunities for achieving a range of community objectives, values, and priorities.	Propose a silviculture regime to address non-timber values. Take advantage of external funding for enhanced silviculture programs such as fertilization, improved resource inventories, or ecosystem restoration. Maintain a salvage program to remove and reforest as much of the MPB-impacted forest as possible. Maintain a basic silviculture program that complies with forest legislation and ensures prompt and appropriate restocking of productive forestland.	C C C C
<b>Status: All commitments are underway.</b>				

BLCF planted over 1,000,000 seedling comprised of a mixture of 40/30/15/15 Spruce, Pine, Fir, Larch in the spring of 2020. We are scheduled to plant an additional 1,100,000 seedlings in the spring of 2021. Free Growing Surveys and stand monitoring are ongoing.

**INTERGRATED USE:** BLCF, while conducting its activities, will strive to consider and incorporate other forest uses within the community forest area.

Corporate Objective Statement	British Columbia Community Forest Association Indicator	Province of B.C. Goals of the Community Forest Program	Management Plan 3 Commitments Appendix 10	Status
Respond to comments received on plans within seven days.	#9: Community Accountability	Promote community involvement and participation.	Have a strong commitment to managing the land for all resource values.	C / ON
			Consult with forest users during operational planning and consider their needs. These users include guider outfitters, trappers, range tenure holders, mining tenure holders, oil & gas companies, and outdoor recreational use.	ON
	Continue to support local organizations in maintaining and improving recreation sites, trails, and access.		ON	
#10: Public Engagement	Explore developing a new web-based tool to improve the maps and resource information provided to the recreational users and the public by BLCF.		ON	
	Explore alternative visual landscape planning approaches and update the visual landscape database.		C / ON	
Minimum of two public information meetings per year.	#12: Investments in Recreation		Provide maps and engage with active trappers and guide outfitters, on the planned annual activities prior to September 1st of each year.	ON
		Use visual landscape planning principles and design in harvest planning.	C / ON	
		Ensure public access is maintained.	C / ON	
Status: All commitments are underway.				

BLCF continues to support the Lakes Outdoor Recreation Society by funding recreation site maintenance, as well as upgrades to sites within the community forest. BLCF also supports the Burns Lake Mountain Biking Association, Omineca Ski Club, Burns Lake Fire Training Society, Burns Lake Paintball Society, among many others in the community.

**ENVIRONMENTAL STEWARDSHIP:** BLCF will incorporate sound science-based information recommendations in its forest management activities.

Corporate Objective Statement	British Columbia Community Forest Association Indicator	Province of B.C. Goals of the Community Forest Program	Management Plan 3 Commitments Appendix 10	Status
Zero non-compliance with Forest and Environmental legislation.	#17: Forest Stewardship	Undertake community forestry consistent with sound principles of environmental stewardship that reflect a broad spectrum of values.	Given the impact of forest health factors, use forest management and harvest planning strategies that will sustain the long term productivity of the working forest while minimizing impact on non-timber resources including fish, wildlife, recreation, biological diversity, wilderness and water.	ON
			Encourage diversity of tree species and age classes across the landscape.	ON
			Protect biological diversity on the BLCF.	ON
			Explore ecosystem restoration in areas impacted by the MPB.	ON
			Complete wildlife habitat modeling for important species and modeling of rare and sensitive ecosystems for use in forest management.	C
	#18 Compliance with Environmental Standards.		Explore alternative approaches to meet environmental protection.	ON
			Classify areas best able to meet biodiversity objectives using ecological mapping, wildlife habitat modeling, and updated forest inventories. Define biodiversity objectives that are both consistent with regional plans but specific to the BLCF boundaries taking into consideration the impacts of the MPB.	C
			Respond promptly to road-induced erosion in order to minimize environmental	ON
			Explore funding sources and implementation of ecosystem restoration in areas impacted by the mountain pine beetle.	ON
			Improve the use of PEM in forest management planning.	ON / C
	Improve stream inventory and classification.	C		

All commitments are currently complete and ongoing or underway.

**PUBLIC CONSULTATION:** The province, First Nations, local governments, stakeholders, and the community will be consulted regarding proposed activities within the community forest area.

Corporate Objective Statement	British Columbia Community Forest Association Indicator	Province of B.C. Goals of the Community Forest Program	Management Plan 3 Commitments Appendix 10	Status
Respond to comments received on plans within seven days.	#9: Community Accountability	Promote community involvement and participation.	Maintain community representation on the BLCF Board of Directors.	C
			Maintain First Nations representation on the BLCF Board of Directors.	C
			Continually improve the BLCF website to incorporate more information and make it easier for the public and stakeholders to use.	C/ON
			Conduct at least one formal public meeting each year to inform the general public of the activities of the community forest.	C
			Continue to improve and provide consultation opportunities to the public on the management and operations of the BLCF.	C
Minimum of two information meetings per year.	#10: Public Engagement	Promote communication and strengthen relationships between	Provide an annual report on the BLCF performance to shareholders, stakeholders, First Nations, and the general public.	C
			Hold an Annual General Meeting as required by the articles of incorporation.	C
	#15: First Nations Involvement	Aboriginal and non-Aboriginal communities and persons.	Maintain a bulletin board in the local mall, weekly column in the local newspaper, and an "open-door" policy.	C
			Develop and maintain a Communications Strategy.	C
			Explore and implement developing a new web-based tool to improve the maps and resource information provided to the recreational users ands the public by the BLCF .	N/A
Status: All commitments are complete / ongoing.				

The six-member Board of Directors currently has three members of the community at large and one member of each the Burns Lake Band, Office of the Wet'suwet'en Hereditary Chiefs, and Wet'suwet'en First Nations. BLCF has a website, Twitter, and Facebook page, weekly Community Forest Corner newspaper ad, and a mall bulletin board. BLCF also hosts an Annual Public Information Open House to provide operational updates to the community.



**BENEFITS TO THE PROVINCE, VILLAGE, FIRST NATIONS, AND RESIDENTS:** Taxes, royalties, rents, disbursements, donations, and other benefits will be distributed to the province, local government, shareholders, stakeholders, and the community from the profits generated from the community forest. Goods, labour, and services will be sourced from the local area to the extent it is available and cost effective to do so.

Corporate Objective Statement	British Columbia Community Forest Association Indicator	Province of B.C. Goals of the Community Forest Program	Management Plan 3 Commitments Appendix 10	Status
10% of gross profit donated to community groups.	#1 Number of Jobs	Promote communication and strengthen relationships between Aboriginal and non-Aboriginal communities and persons.	Continue profit sharing to participating First Nations as per the Community Forest Agreement.	C
50% of net profit above net profit margin distributed to shareholder and First Nations partners.	#3 Community Contributions		Distribute a portion of the cf profits to the Village to support Community priorities when the financial performance warrants it.	C
			Support jobs for local residents and First Nations.	C
			Support local mills whenever feasible by maintaining an inventory of logs "for sale" for local mills.	C
			Protect and respect the confidentiality of First Nations' cultural resources.	C
			Continue donations for local community organizations and functions.	C
			Favor local suppliers, customers, consultants and contractors.	C
80% of contracts offered to First Nations	#4 Funds leveraged by community forest contributions.	Promote community involvement and participation.	Continue to pay stumpage, royalties, rents, and taxes as required under the statutes of the Province of British Columbia.	C
			Support the Provincial Government's agreement with Hampton Affiliates by offering timber to the local mill.	C
80% of contracts offered to local contractors.	#11: Investments in education.		Provide financial or in-kind support to local organizations and First Nations in support of developing the FireSmart program.	C
		Diversify the use of and benefits derived from the cf area.	Support First Nations and Community involvement in the governance and supervision of the BLCF through membership on the Board of Directors.	C
80% of cost of goods sold sourced locally.	#15 First Nations Involvement		Continue to provide opportunities for public recreational use at the current level and to explore opportunities for increase and enhancement in the future.	C
<b>Status: All commitments are complete / ongoing.</b>				

85% of Contracts offered and tendered were local and \$91,964.82 was donated to local service clubs, sports teams, and events. Due to COVID-19 very few applications were received from non-for-profit local service clubs and organizations

100% of BLCF's fibre was harvested by local contractors and 85% of goods and services were purchased locally. BLCF also provided \$323,881 in stumpage revenue to the government.

